

# Social Value **Spotlight Brochure**

2023-24



Area	Q1	Q2	Q3	Q4	Total
Community Investment Grants 2023/2024	£122,109	£217,706	£340,000	£779,462	<b>£1,459,277</b>
Commercial Services and Home Ownership	£80,276	£99,163	£136,941	£132,219	<b>£448,599</b>
Homes Operations	£2,874,366	£2,972,925	£3,492,972	£3,446,545	<b>£12,786,808</b>
Damp and Mould	£12,705	£19,305	£20,790	£43,395	<b>£96,195</b>
Domestic Abuse Services	£389,636		£438,596	£455,516	<b>£1,283,748</b>
Employability and Volunteering	£146,226	£163,171	£13,040	£38,093	<b>£360,530</b>
Income and Lettings	£352,078	£306,765	£338,813	£204,380	<b>£1,202,036</b>
Neighbourhoods	£22,820	£248,738	£87,486	£17,257	<b>£376,301</b>
Retirement Living	£4,559,817	£2,847,817	£588,534	£559,209	<b>£8,555,377</b>
Supported Living	£243,299		£757,997	£322,521	<b>£1,323,817</b>
Tenancy Management and Sustainment	£1,187,222	£1,256,868	£1,292,229	£1,427,237	<b>£5,163,556</b>
Development	£463,904	£479,164	£903,392	£1,440,544	<b>£3,287,004</b>
Customer Engagement				£366,598	<b>£366,598</b>
Environmental and Sustainability - Retrofit				£184,980	<b>£184,980</b>
<b>Total</b>	<b>£10,454,458</b>	<b>£8,611,622</b>	<b>£8,410,790</b>	<b>£9,417,956</b>	<b>£36,894,826</b>

# Social Value and Impact

## £36,894,826

recorded gross social value within HACT

### Income and Lettings

**£124,444**

in DHP payments secured

**1052**

customers signposted for additional support

**305**

customers supported into secure housing

### Community Grants

**460**

grant applications authorised

**2658**

households helped with things like gardening projects, pet therapy and school uniforms

### Customer Engagement

**95**

customers referred to We Are Group for support with digital skills

**98**

engaged customers regularly volunteering to help shape and improve services

### Commercial Services & Home Ownership

**£9,712,282**

secured in receipts with 130 customers supported

### Development

**83%**

new properties rated EPC B or above

### Homes Operations

**7739**

surveyed customers satisfied with our repairs service







**It was  
great to  
connect**  
residents with **our partners**

"It was great to connect residents with our partners, to listen to what they thought was working well, and to hear their suggestions of how Stonewater can further improve the development."

Neighbourhoods

**£376,301**

## Headlines

- **413 Parking concerns resolved**
- **365 Tree and boundary concerns completed**
- **639 Fly tipping, bin and items in communal areas cases resolved**

## Activities

### Community days

We visited schemes with our contracting partner, Wates, and carried out repairs, hosted talks with the fire service about fire safety and We Are Group offered free IT courses for our customers.

### Happy to chat benches

We have worked with some Stonewater communities to create new seating areas for customers to come together and enjoy being outdoors.

### Proactively tackling fly tipping

We have been proactively engaging customers and have run a poster campaign which have had a real impact on schemes prone to fly-tipping.

## Case Study

Brian was ready to move on after a career break due to his mental health and relationship/family issues.

He wanted to attend forklift refresher training to renew his expired licenses. We applied to Longleigh for funding on the training, travel expenses to the training, and funding for clothing and safety shoes.

This was approved and training has been arranged for Brian. Brian's life is now back on track and he is seeing his son on a regular basis.

## Employability and volunteering

# £360,530

## Headlines

- **5 customers secured employment**
- **7 Longleigh grants for training approved**
- **2 customers secured volunteering roles with the Eastbourne INVITE project**
- **2 customers received support for a business idea through Dragon's Den 23/24**

## Dragons' Den 2023/2024

We held another successful Stonewater Dragons' Den programme. We invited customers with an idea or a business less than six months old to pitch for funding of £1000 towards their business.

Other finalists were given ongoing support in the form of training and mentorship for their ideas to ensure no one left empty handed.

Our successful bid came from a Teresa, with an idea to create a business selling dried flowers preserved in resin.

Alongside Teresa's successful pitch, we've also offered further support to Kasha, in the form of funding through a Community Investment Grant to take the idea of helping mothers and children with disabilities learning to crochet forward.

Kasha said:

"I really enjoyed the course, I am able to look at how I can target audiences with social media and also how I can build my craft business up without much capital"

"With very little, you can go far."



Previous Stonewater Dragons' Den winner Laura now trades as an ice cream seller in her village using the bike bought with her winnings from last year's competition.

## Domestic Abuse Services

# £1,283,748

### Headlines

- **£26,760 funding and grants secured**
- **191 households provided services**
- **68 households moved into secure housing**
- **64 customers assisted into employment, training and volunteering**



### Case Study

One customer moved to us after leaving an abusive relationship. She had found it difficult to access secure accommodation due to her two dogs.

She is completing several of our workshops such as the recovery toolkit, understanding mental health as well as our independent living workshop. She has been with us for 5 months and during this time she's shown real positive development.

She is also being supported to register for housing. When the time comes to move on, she will be supported to apply for Lingleigh grants.

We have also been able to use grant funding to provide additional security, such as car covers and ring doorbells, which have meant that our customers can feel safer in their homes.





Development

# £3,287,004

## Headlines

- **1185 new homes completed**
- **Space for up to 5072 people to have a place they can call home**
- **441 trees planted on new developments and 5925 funded in partnership with Community Forest Trust**
- **1009 new homes have access to communal outdoor spaces, including play areas**

### Cripps Avenue, Peacehaven

Cripps Avenue is an MMC project built by local manufacturer Boutique Modern. Peacehaven has strong connections with the armed forces and the poppy-themed public art for this scheme was designed with this in mind. A local artist created the artwork.

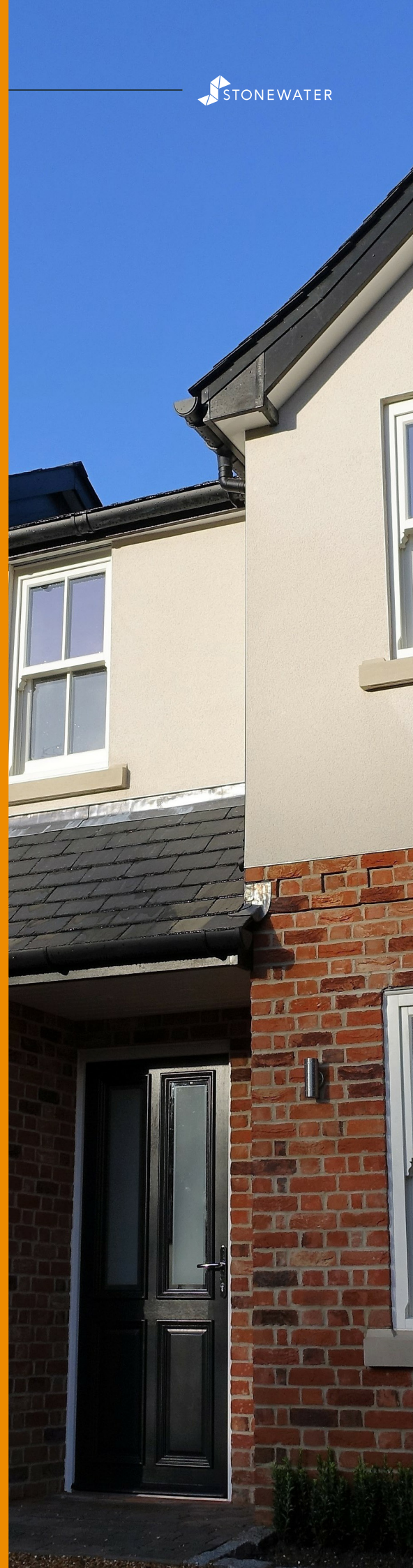
### Greenlakes Rise, Wixams

Greenlakes Rise has delivered 38 homes with a mix of social rent and shared ownership. Upon completion of the scheme some fruit trees were planted in the gardens. Stonewater has also worked in Partnership with Morris Homes to plant even more fruit trees.

### Case **Study**

Stonewater financially contributed a total of £10,000 to the neighbouring Meridian Community Primary School.

The donation was put towards the school creating a sensory garden for the children, providing some sheds for the use of storing nursery items and bicycles and playground equipment that the children can enjoy.





Retirement living

**£8,555,377**

## Headlines

- **369 social activity sessions delivered**
- **63 newsletters produced**

### **Act on Energy Coffee Morning – The Firs, Meriden**

Act on Energy offers support to those on low incomes, experiencing fuel poverty, and having problems with debt management.

As a result, several customers received monetary help with their existing energy bills. One customer has been accepted for a payment of over £400 to help with energy poverty and debt management.

All customers that qualified for a payment were ecstatic that they had been awarded money to help them during their difficult financial times.

One customer who was in arrears with his energy provider was able to clear the debt and leave a surplus on his account.





## Supported living

# £1,323,817

### Case Study

IH moved into the Foyer after a family breakdown. IH really wanted to work but had very low confidence and self-esteem following homelessness and issues with her family.

We coached IH to get involved with events at the Foyer and meet with the community. As a result she had the confidence to help arrange Christmas events with our coaching staff.

IH accessed help with CV and interview skills with the Exeter Works drop in and Inspiring Change.

IH got a job in a local call centre after four months at the Foyer.

She is now training to be a supervisor and has found her own flat. We are supporting her to move using the rent deposit scheme.

### Ready, Steady, Cook!

Our first project with Venner, a Social Enterprise Company, in collaboration with Exeter Foyer was a considerable success.

A Ready, Steady, Cook! night was held with a group of young people who were supported by their Project Coordinators and three families received a box of seasonal ingredients to create meals together.

Two brothers enjoyed it so much they have now committed to cooking a meal together each week using fresh ingredients.



[www.stonewater.org](http://www.stonewater.org)

Stonewater Limited, Charitable Registered Societies  
No. 20558R.  
Registered office:  
Suite C, Lancaster House  
Grange Business Park  
Enderby Road  
Whetstone  
Leicester  
LE8 6EP.

